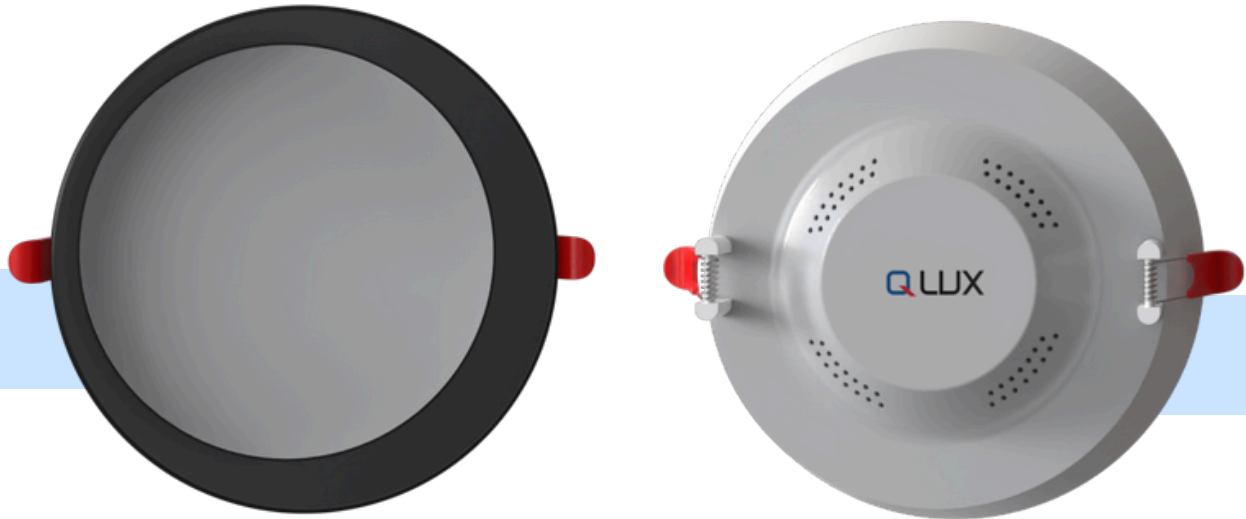


## 12W/18W LED DEEPDOWN LIGHT

LED deep down lights: Sleek, recessed lighting for a modern look and energy-efficient glow.



### Features

- High Lumen Output: Provide bright and concentrated light for well-lit spaces.
- Good Color Rendering (CRI): Deliver accurate and natural colors, ideal for tasks requiring good vision.
- Recessed Design: Create a sleek, minimalist look that blends seamlessly into the ceiling.
- Narrow Beam Angle: Focus light downward, reducing glare and unwanted light spill.
- Energy Saving: Consume less energy compared to traditional lights, leading to lower electricity bills.
- Long Lifespan: Last significantly longer than conventional bulbs, reducing maintenance costs.

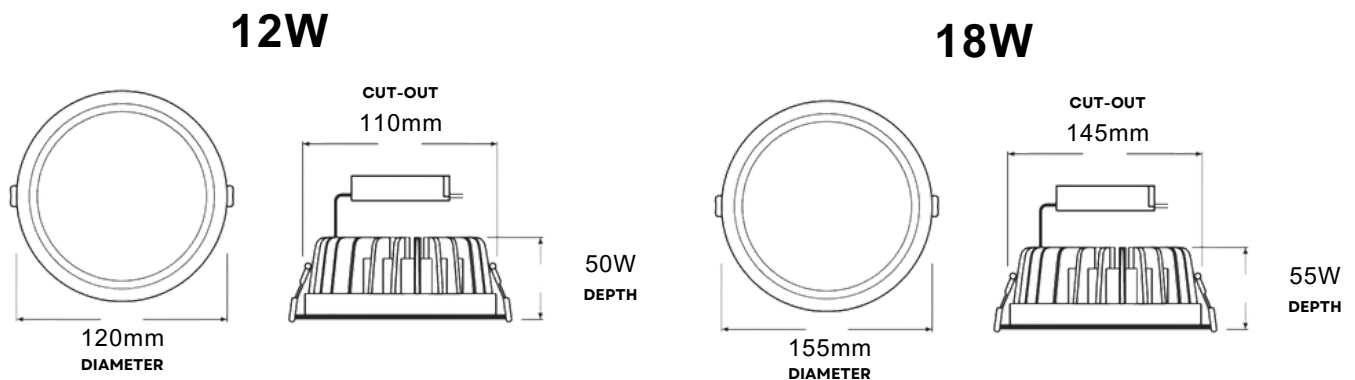
### Product Benefits

- Modern Look & Space Saving
- Low Maintenance
- Cost Savings
- Improved Lighting & Reduced Glare

## Technical Information

<b>BRAND</b>	QLUX	<b>RATED LIFE TIME (HR)</b>	50000 HR
<b>WATT</b>	12W/18W	<b>WORKING TEMP</b>	20° TO 40° C
<b>PRODUCT TYPE</b>	LED DEEPDOWN LIGHT	<b>LUMINOUS EFFICACY(LM/W)</b>	100 LM/M
<b>APPLICATION</b>	INDOOR	<b>BEAM ANGLE</b>	110°
<b>BODY COLOR</b>	BLACK AND WHITE	<b>MOUNTING</b>	CEILING RECESSED
<b>BODY MATERIAL</b>	ALUMINUM	<b>COLOR RENDERING INDEX</b>	RA≥80
<b>IP XX</b>	IP44	<b>OPERATION VOLTAGE</b>	AC100-240V, 50/60HZ

## Dimension



## Application

LED deepdown lights are excellent for providing overall illumination in various rooms like kitchens, living rooms, bedrooms, and hallways. They offer even light distribution, making them ideal for everyday activities.