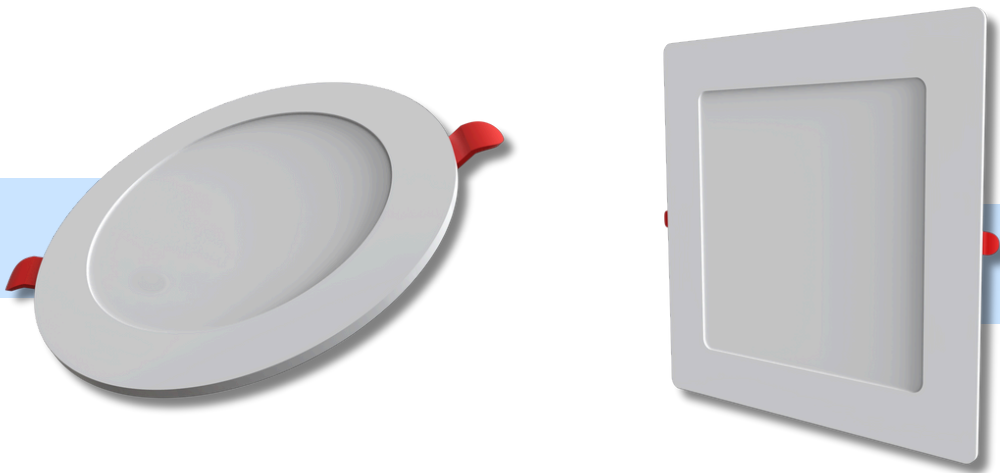


LED PANEL LIGHT SLIM

Slim LED panel lights are a popular choice for both residential and commercial applications due to their combination of aesthetics, functionality, and energy efficiency.



Features

- **Strength and Durability:** The metal housing provides superior protection for the LED components compared to plastic alternatives.
- **Heat Dissipation:** Metal conducts heat more effectively than plastic, which helps to keep the LEDs cooler and extend their lifespan.
- **Modern Aesthetic:** The clean lines and metallic finish of these lights create a modern and sophisticated look.
- **Variety of Options:** Metal surface panel lights come in a wide range of sizes, wattages, and color temperatures.
- **Even Illumination:** Just like other LED panels, they distribute light evenly across their surface, eliminating glare and creating a comfortable lighting environment.

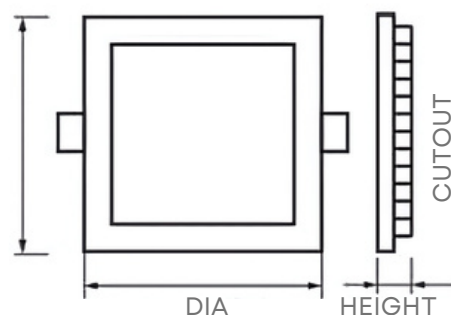
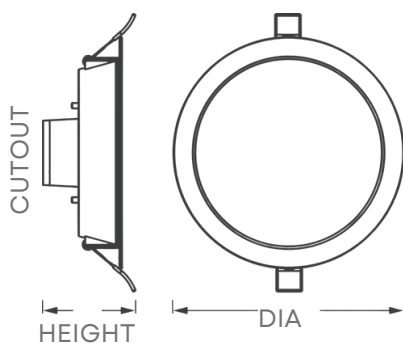
Product Benefits

- Energy Savings
- Long Lifespan
- Durability
- Light Quality
- Dimming Capability

Technical Information

WATT	8W-15W-20W	POWER FACTOR	> 0.95
TYPE	LED LIGHT	EFFICIENCY	> 90 %
BODY COLOR	WHITE	POWER SOURCE	220VAC-240VAC, 50HZ
BRAND	QLUX	MATERIAL	METAL
GUARANTEE	2 YEAR	SURGE PROTECTION	6KV
INPUT CURRENT	0.028	OPERATING FREQUENCY(HZ)	50
OPERATING VOLTAGE	100~300	LUMINOUS EFFICACY(IM/W)	71.7
INPUT VOLTAGE	220V	CRI	> 80
FREQUENCY	50 HZ	DIMENSION(MM)	120-170-225
BEAM ANGLE	160°	CUTOUT(MM)	105-155-205
COLOR	CW-NW-WW	DOB/ DRIVER BASE	ISOLATED LED DRIVER

Dimension



Application

They are ideal for illuminating a variety of spaces including offices, classrooms, retail stores, healthcare facilities, and even homes, providing a comfortable, modern aesthetic and significant cost savings over time.